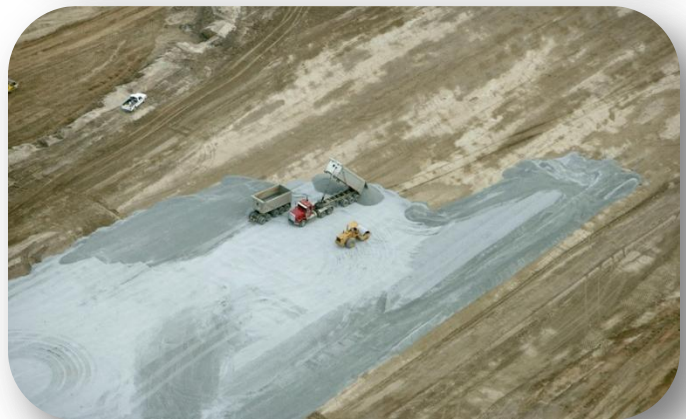




TUTTLE HILL Ypsilanti Township, MI

Complete earthwork package for a 250 acre residential development located in southeast Michigan. Scope of work included selective site clearing, demolition, soil erosion controls, mass grading, fine grading, seeding and final site clean-up. In addition to the mass grading of the site, temporary earth dams were installed to control the lake water levels located on the development's property. The lakes were pumped dry using large 12" pumps. Once the lakes were pumped dry, we excavated approximately 400,000 cubic yards of silty sandy clay mixed soil from the lake bottom and placed that material in controlled fill areas. This material was manipulated to achieve optimum moisture content to reach maximum dry density. This project encompassed a wetland area, which had to be restored with wetland mitigation, wetland plantings and native grasses. It was monitored closely by the Michigan Department of Natural Resources.





PAST PERFORMANCE